



Vendor: Cisco

Exam: 352-001

Version: Demo

Using CertifySky products during preparation for your certification exams, we guarantee your success in the **FIRST** attempt

# CertifySky - King of Computer Certification

**Important Information, Please Read Carefully**

## **CertifySky products**

1) Questions and Answers (PDF format).

**Pass Your Exam at First Attempt with 100% Pass Guarantee**

2) Study Guide (not available for all exams)

Build a foundation of knowledge which will be useful also after passing the exam.

## **Latest Version**

We are constantly reviewing our products. New material is added and old material is updated. Free updates are available for ONE year after the purchase.

CertifySky Offers leading edge certification Exam questions and Study Guides for all IT Certifications like Microsoft [MCSE](#), Cisco [CCNA](#), [CCNP](#), [CCIE](#), CompTIA [A+](#), [Novell](#), [Lotus](#), [Sun](#), [Oracle](#), [HP](#), [IBM](#), [EMC](#)... and offers free demo for all products. We are the only one site can offer demo for almost all products.

To know more about Hot IT Certifications, feel free to visit CertifySky website:

<http://www.certifysky.com>

**Q: 1 Lafayette Productions is looking for a new ISP that has improved availability, load balancing, and catastrophe protection. Which type of ISP connectivity solution would be best?**

- A. single run
- B. multi-homed
- C. stub domain EBG
- D. direct BGP peering

**Answer: B**

**Q: 2 NetFlow provides valuable information about network users and applications, peak usage times, and traffic routing. Which function is of NetFlow?**

- A. monitor configuration changes
- B. monitor CPU utilization
- C. monitor link utilization
- D. generate traps for failure conditions

**Answer: C**

**Q: 3 The XYI company is deploying OSPF on a point-to-multipoint Frame Relay network. The remote sites needn't to communicate with each other and there are a relatively small number of sites (scaling is not a concern). How to configure OSPF for this topology in order to minimize the additional routing information injected into the network and keep the configuration size and complexity to a minimum?**

- CertifySky.com - King of IT Certification
- A. Configure the link as OSPF nonbroadcast and manually configure each of the remote sites as a neighbor.
  - B. Configure the link as OSPF broadcast and configure the hub router to always be the designated router.
  - C. Configure the link as OSPF broadcast and configure a mesh group towards the remote routers.
  - D. Configure the link at the hub router as OSPF point-to-multipoint and at the remote routers as OSPF point-to-point.

**Answer: B**

**Q: 4 What is high availability?**

- A. redundant infrastructure
- B. clustering of computer systems
- C. reduced MTBF
- D. continuous operation of computing systems

**Answer: D**

**Q: 5 What is the way that an OSPF ABR uses to prevent summary route information from being readvertised from an area into the network core (Area 0)?**

- A. It advertises only inter-area summaries to the backbone.
- B. It uses poison reverse and split horizon.
- C. It only sends locally originated summaries to the backbone.
- D. It compares the area number on the summary LSA to the local area.

Answer: C

**Q: 6 Connecting an IS-IS router to four links and redistributing 75 routes from RIP.**

**How many LSPs will be originated by this router?**

- A. one LSP: containing the router information, internal routes, and external routes
- B. six LSPs: one for each link, one containing router information, and one containing external routing information
- C. two LSPs: one containing router information and internal routes and one containing external routes
- D. three LSPs: one containing all links, one containing router information, and one containing external routing information

Answer: A

**Q: 7 According to the network in this exhibit, traffic directed towards 10.1.5.1 arrives at XYI-R4. Which path will the traffic take from here?**

- A. It will take XYI-R2.
- B. It will not take any path. XYI-R4 will drop the traffic.
- C. It will take XYI-R3.
- D. It will load share between XYI-R2 and XYI-R3.

Answer: A

**Q: 8 You are the Cisco Network Designer in xxyyinc.com. Which two characteristics are most typical of a SAN? (Choose two.)**

- A. NICs are used for network connectivity.

- B. Servers request specific blocks of data.
- C. Storage devices are directly connected to servers.
- D. A fabric is used as the hardware for connecting servers to storage devices.

**Answer: B, D**

**Q: 9 The IGP next-hop reachability for a BGP route is lost but a default route is available.**

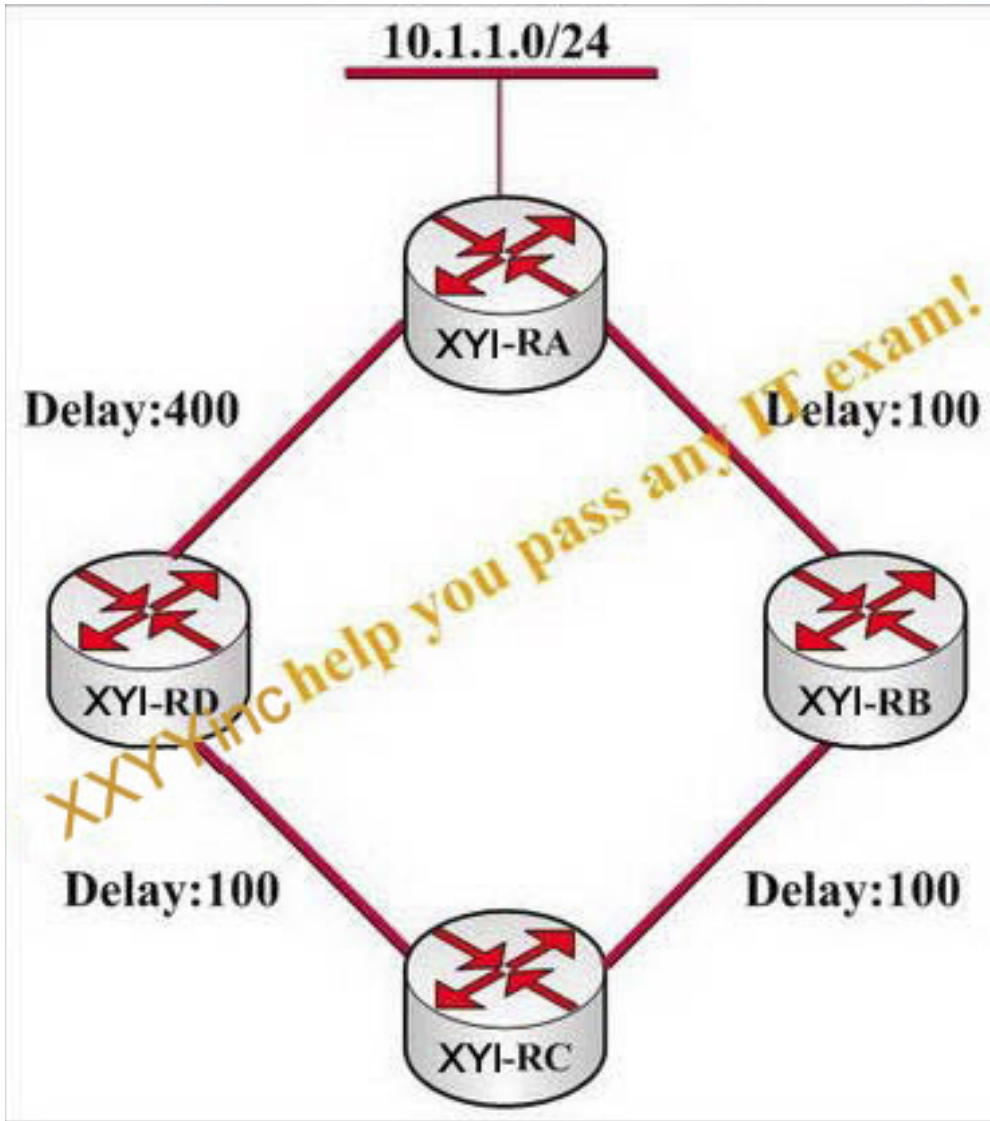
**Assuming that BGP connectivity is maintained, what will happen to the BGP route?**

- A. It will be put in a hold-down state by BGP until the next hop has been updated.
- B. It will be removed from the BGP table.
- C. It will be considered a valid route.
- D. It will be considered invalid for traffic forwarding.

**Answer: C**

**Q: 10 In the network presented in the following exhibit, all routers are configured to perform EIGRP on all interfaces. All interface bandwidths are set to 1000, and the delays are configured as displayed. In the topology table at Router XYI-RC, you see only one path towards 10.1.1.0/24.**

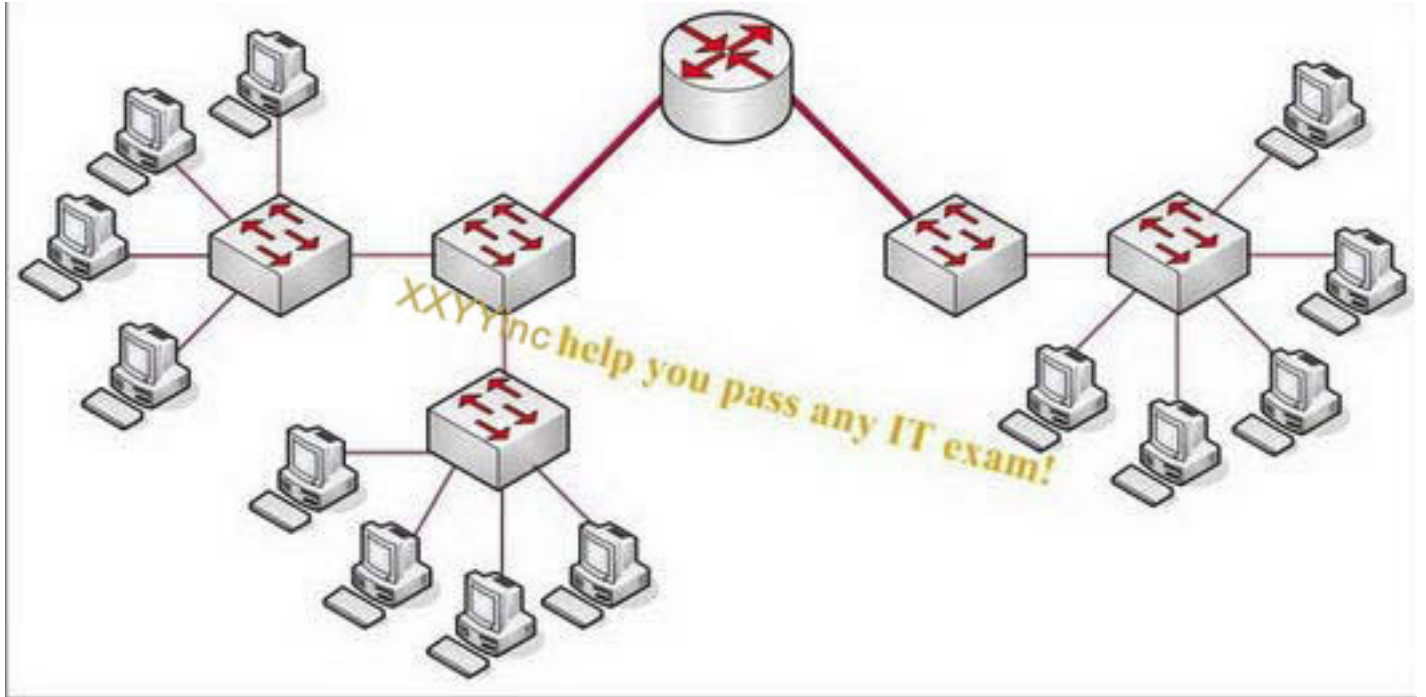
**Why Router XYI-RC only has one path in its topology table?**



- A. Router XYI-RB is not advertising 10.1.1.0/24 to Router XYI-RC due to split horizon.
- B. Router XYI-RD is not advertising 10.1.1.0/24 to Router XYI-RC because Router XYI-RC is its feasible successor.
- C. Router XYI-RD is not advertising 10.1.1.0/24 to Router XYI-RC due to split horizon.
- D. Router XYI-RB is not advertising 10.1.1.0/24 to Router XYI-RC because Router XYI-RC is its feasible successor.

**Answer: C**

**Q: 11** How many broadcast segments are contained in this network according to the exhibit?



- A. 1
- B. 2
- C. 4
- D. 5

**Answer: B**

**Q: 12** Which VPN management feature would be considered to ensure that the network had the least disruption of service when making topology changes?

- A. dynamic reconfiguration
- B. path MTU discovery

C. auto setup

D. remote management

**Answer: A**

**Q: 13 What information can you get from TCP flags while assessing an attack?**

A. source of the attack

B. type of attack

C. target of the attack

D. priority of the attack traffic

**Answer: B**

**Q: 14 Which two steps can be taken by the sinkhole technique? (Choose two.)**

A. reverse the direction of an attack

B. redirect an attack away from its target

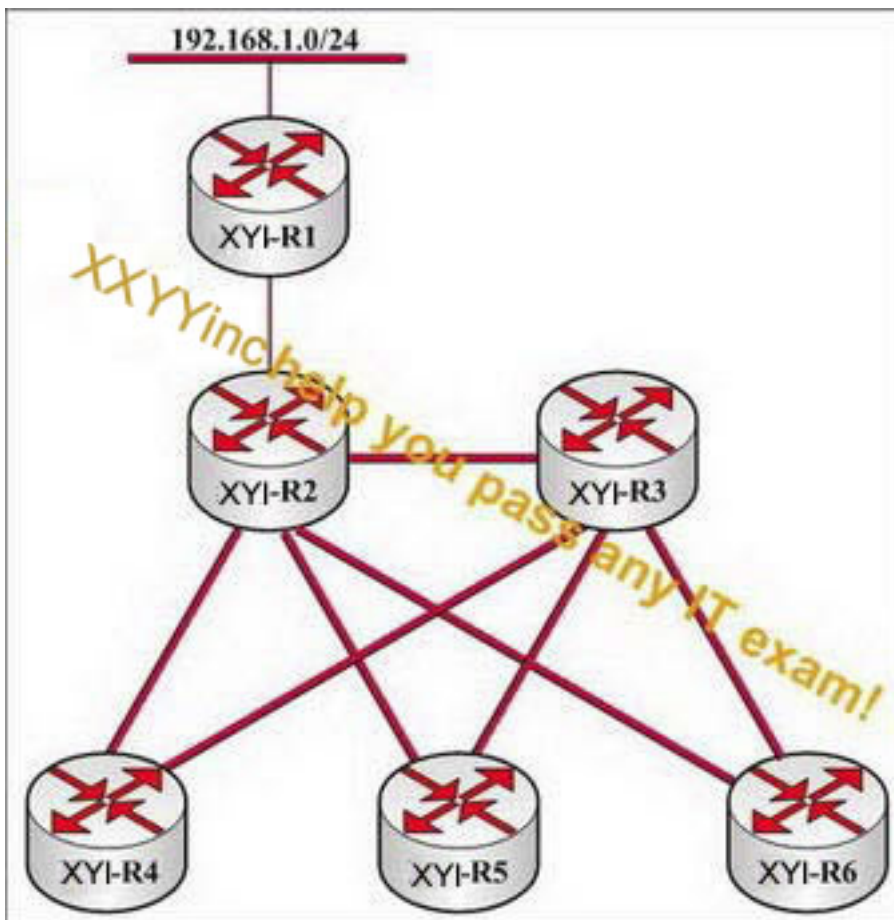
C. monitor attack noise, scans, and other activity

D. delay an attack from reaching its target

**Answer: B, C**

**Q: 15 In the network presented in the following exhibit, all routers are configured to run EIGRP on all links. All packets transmitted during convergence are transmitted once (there are no dropped or retransmitted packets).**

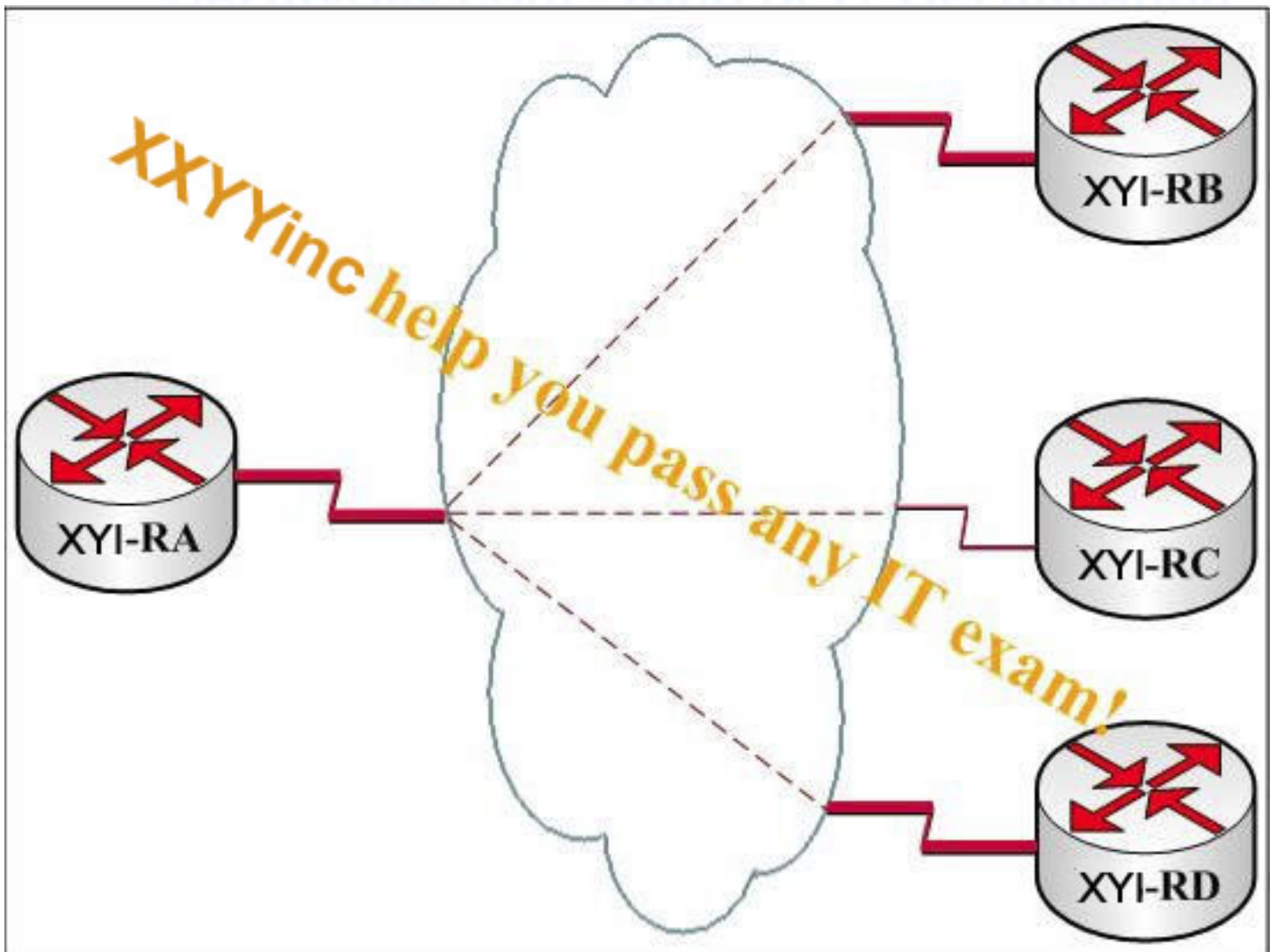
**What is the maximum number of queries XYI-R3 might receive for 192.168.1.0/24 if the link between XYI-R1 and XYI-R2 fails?**



- A. four queries, one each from XYI-R2, XYI-R4, XYI-R5, and XYI-R6
- B. no queries, because there aren't any alternate paths for 192.168.1.0/24
- C. seven queries, one from XYI-R2 and two each from XYI-R4, XYI-R5, and XYI-R6
- D. one query, since the remote routers XYI-R4, XYI-R5, and XYI-R6 are natural stubs in EIGRP

Answer: A

**Q: 16 All routers in this network are running EIGRP according to the exhibit. Which step is the most important to make sure that this network core will converge quickly should a link failure occur?**



- A. make certain the maximum number of paths on both of the routers is two
- B. make certain EIGRP is not running across non-transit links
- C. add another link between the two routers with no servers and set the metric on this new link equal to the other four links
- D. make certain EIGRP is running across all links

**Answer: B**

**Q: 17** When designing a converged network, which measures can be taken at the building access layer to help eliminate latency and ensure end-to-end quality of service can be maintained? (Choose three.)

- A. rate limit voice traffic
- B. configure spanning-tree for fast link convergence
- C. isolate voice traffic on separate VLANs
- D. classify and mark traffic close to the source

**Answer: B, C, D**

**Q: 18** Which two reasons are correct about building a flooding domain boundary in a link-state network? (Choose two.)

- A. to increase the size of the Shortest Path First tree
- B. to aggregate reachability information
- C. to provide an administrative boundary between portions of the network
- D. to segregate complex and rapidly changing portions of the network from one another

**Answer: B, D**

**Q: 19** The XYI company is planning to deploy a new multicast application in its network to do real-time trading. This application will be performed simultaneously by thousands of traders located throughout the network, each a source of several IP multicast streams, to carry the "sell" and "buy" trading bids. All routers in its network have full hardware support for all PIM multicast modes.

Which mode can be used to minimize the impact of the new application on the routers in the XYI network?

A. PIM Source Specific Multicast

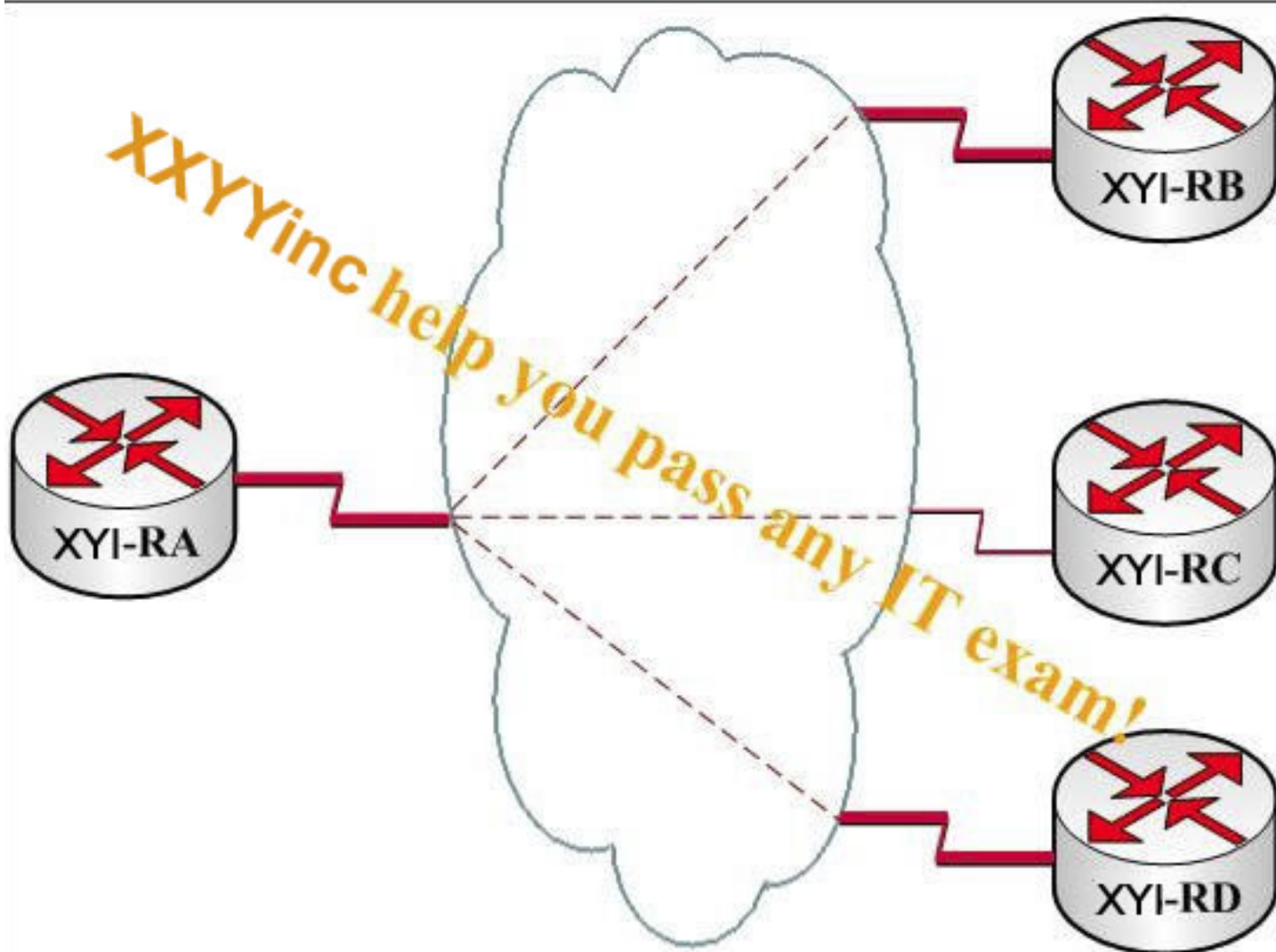
B. PIM Any-Source Multicast

C. PIM Dense Mode

D. PIM Bidirectional

**Answer: D**

**Q: 20** You work as a network technician for the XYI Ltd. Study the exhibit carefully, router XYI-RA is the hub router in a Frame Relay hub-and-spoke deployment. Configure router XYI-RA's serial interface as a point-to-multipoint interface, and it is servicing three spoke routers. The link between Router XYI-RC and the frame provider experiences a service disruption, which causes the interface on Router XYI-RC to go down. How does Router XYI-RA learn of this failure in the network and how does it react?



A. If OAM is configured between Router XYI-RA and Router XYI-RC, router XYI-RA will be notified of the failure after three missed OAM packets. After the third OAM packet is missed, the frame PVC becomes inactive, and this event terminates the routing process neighbor relationship established between Router XYI-RA and Router XYI-RC.

B. Router XYI-RA does not detect the failure in the network and its interface continues to remain in an operational state. If routing is configured over this link, Router XYI-RA must wait for the neighbor relationship to time-out before updating its routing table to account for the lost router and its networks.

C. Router XYI-RA must wait for a full LMI status update from the provider frame switch before it is notified about the PVC status.

Once the full LMI status message is received, the routing process neighbor relationship between Router XYI-RA and Router XYI-RC is immediately terminated.

D. Router XYI-RA immediately detects the failure via LMI notification and its interface is placed in a non-operational state. If routing is configured over this link, the neighbor relationship is terminated and the routing table is updated. The change is then propagated as appropriate to the rest of the network.

**Answer: B**